



Summary of Submissions up to December 2018

A Report to the Diocese of Maitland-Newcastle

Trudy Dantis, Paul Bowell & Stephen Reid

Contents of this Report

- ◆ **About this Report**
- ◆ **Diocesan Submissions Summary Snapshot: May—December 2018**
- ◆ **Number of Submissions Received – all Australia**
- ◆ **Number of Submissions Received – Diocese of Maitland-Newcastle**
- ◆ **Age and Sex of Respondents**
- ◆ **Countries of Birth**
- ◆ **Aboriginal and Torres Strait Islanders**
- ◆ **Regional Location of Submissions Received**
- ◆ **Religion of Respondents**
- ◆ **More information on the Plenary Council submissions**

About This Report

The National Centre for Pastoral Research is pleased to provide you with this report on the contributions from your diocese to the Plenary Council process. This report is a brief summary of submissions from people within your diocese from the start of the online process which opened on 20 May 2018, until 31 December 2018.

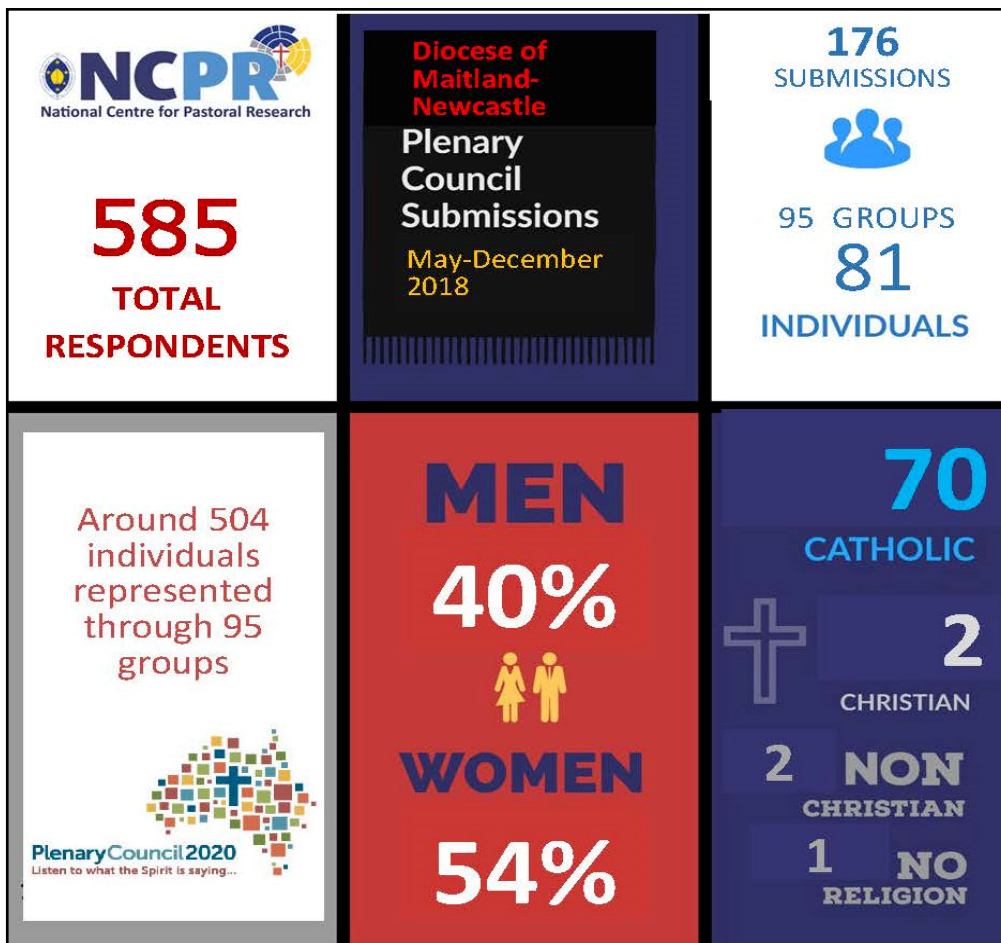
The Plenary Council questionnaire did not ask respondents for the diocese in which they were located. However, it asked participants to type in their postcode. These postcodes have been used as a basis for this analysis.

We have attempted to provide you with as much detail as possible to help you focus your efforts on groups that might be underrepresented in your diocese. For example, if your report shows that most of your submissions are from people over the age of 70, perhaps you could encourage the younger people in your diocese to contribute in the period until Ash Wednesday, 6 March 2019. This is when the online process for making submissions will close. We will not be accepting any more submissions after that date.

Please note: This report does not contain any analysis of the content of the submissions from your diocese. These will be communicated to you in the manner as decided by the Bishops Commission for the Plenary Council and the Plenary Council Executive Committee.

We hope you will find this report useful. A complete report of all submissions from your diocese will be provided at a later date.

Diocesan Submissions Summary Snapshot: May—December 2018



Number of Submissions Received - all Australia

Across Australia we received a total of 5,622 completed responses from May until the end of December.

Of these, 3,614 respondents had participated in the Listening and Dialogue encounter. Another 433 were unsure if they had, so we presume they had not. Less than half the number of respondents (1,573) indicated that they had not participated in a Listening and Dialogue Encounter.

Of the 5,622 completed responses, there were 232 respondents who did not continue with their submission after answering “No” to the Listening and Dialogue Encounter question. This brought the total number of usable responses to 5,388. From the 5,388 submissions, 1,709 were from groups or organisations and 3,679 submissions were from individuals. A few more details of the national summary of submissions are provided on page 7 of this report.

Number of Submissions Received - Diocese of Maitland-Newcastle

For the Diocese of Maitland-Newcastle we received a total of 176 completed responses from May until the end of December. Of these, 142 respondents had participated in the Listening and Dialogue Encounter, while another six were unsure if they had. About 28 respondents indicated that they had not participated in a Listening and Dialogue Encounter.

From the 176 submissions, 95 submissions were from groups or organisations and 81 submissions were from individuals. There were 504 people represented through the 95 groups. It is important to note, however, that not all groups completed this question, so total group numbers may be under-represented.

Overall, the total number of respondents from your diocese until 31 December 2018 was 585.

Total number of completed (valid) responses received	176
Participated in Listening & Dialogue Encounter?	
Yes	142
No	28
Not sure	6
Total	176
Submissions received from groups or organisations	95 (represents 504 people)
Submissions received from individuals	81
Total	176

Age and Sex of Respondents

Table 2 shows the ages of individual and group respondents from the Diocese of Maitland-Newcastle. Figure 1 is a graphical representation of the same table. A total of 81 individual submissions were received, with 28 per cent (23) received from those aged 70 and over. Until 31 December 2018, there were **no submissions** received from individual respondents aged under 20 years.

Age groups	Individual submissions		Group submissions	
	Number of persons	% of total	Number of persons	% of total
Under 20 years	0	0	15	3.0
20-29 years	4	4.9	4	0.8
30-49 years	15	18.5	28	5.6
50-69 years	31	38.3	80	15.9
70 years or over	23	28.4	83	16.5
Age unknown or not stated	8	9.9	294	58.3
Total	81	100	504	100

On 5 November 2018, a question was added to the survey asking group respondents to indicate the ages of those represented in the group. Not all groups answered this question. Therefore, the results presented here reflect only the submissions of those groups that responded after 5 November and up to 31 December 2018, and who provided information to this question.

About 32 per cent (163) of group submissions were received from those aged 50 and over.

There were 32 males and 44 females who made individual submissions (See Table 3). One respondent did not answer this question while four respondents preferred not to state their sex.

Fig. 1: Age groups

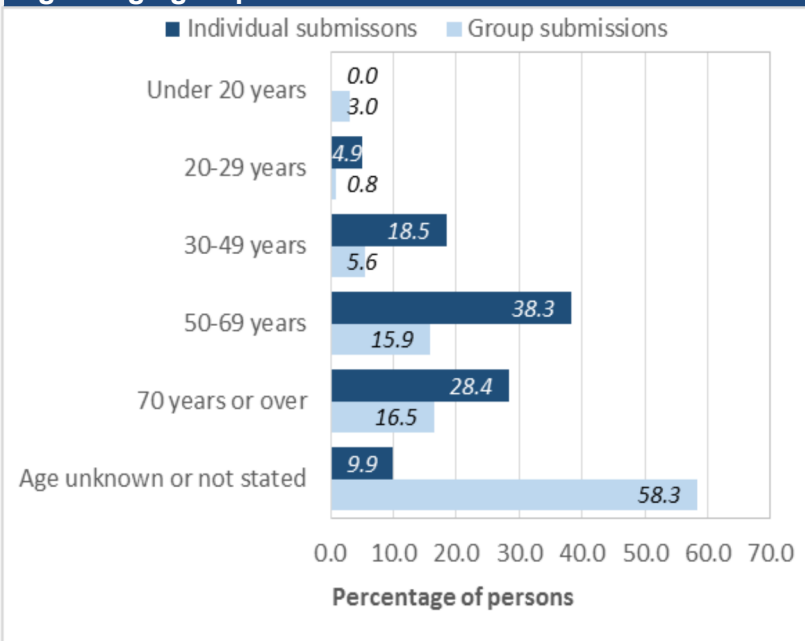


Table 3: Sex (individual responses only)

Female	44
Male	32
Prefer not to say	1
Not stated	4
Total	81

Countries of Birth

As expected, a large number of respondents (79%) were born in Australia. Just under 15 per cent came from other countries. Around six per cent did not state their birthplace. This question was asked of individual respondents only.

Table 4: Countries of birth (individual respondents only)

Australia	64	79.0
Other countries	12	14.8
Not stated	5	6.2
Total	81	100

Aboriginal and Torres Strait Islanders

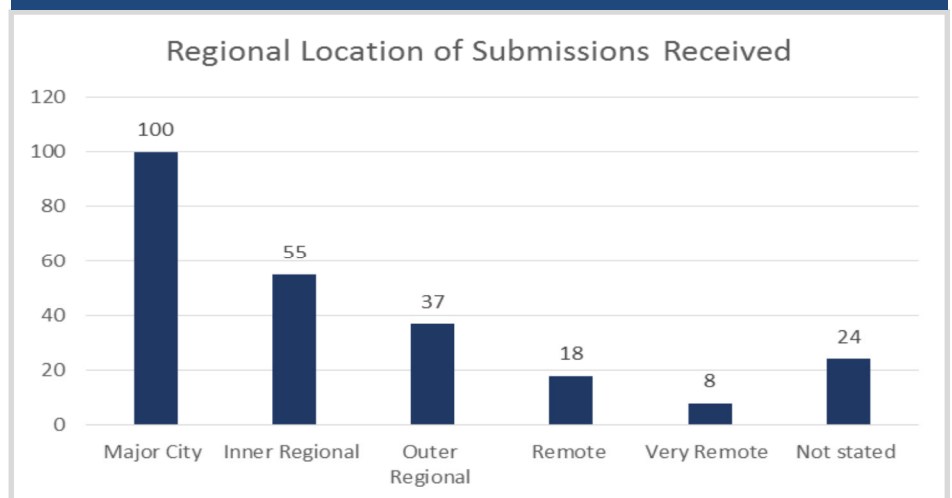
Until 31 December 2018, there were two individuals who identified themselves as Aboriginal and Torres Strait Islanders from the Diocese of Maitland-Newcastle. A further five chose not to answer this question.

Regional Location of Submissions Received

The postcodes provided by individual and group respondents were used as a basis for this analysis.

Using the Australian Bureau of Statistics classifications for geographical areas (called 'Remote Area Indicator'), it was determined that 65 per cent (115) of respondents from the Diocese of Maitland-Newcastle were located in a Major City. There were 60 submissions made from Remote areas and one submission from Very Remote areas.

Fig. 2: Regional Location of Submissions Received



Religion of Respondents

The religion question was answered by individual respondents only. Of the total 81 submissions that were received, 70 respondents (86%) were Catholic. Two respondents were from other Christian denominations while there were two from non-Christian religions. A further six respondents did not state their religion and one respondent chose the 'no religion' response.

For those who indicated that they were Catholic, a further question asked them to describe their participation in Church activities. Their responses are shown in Table 6.

Table 5: Religion (individual responses only)

Catholic	70
Other Christian	2
Non-Christian religion	2
No religion	1
Not stated	6
Total	81

A total of 49 respondents indicated that they went to Mass regularly and were involved in other church activities. There were seven respondents who said they went to Mass and church activities sometimes, while a further 14 respondents considered themselves Catholic but were not involved or described their participation in other terms.

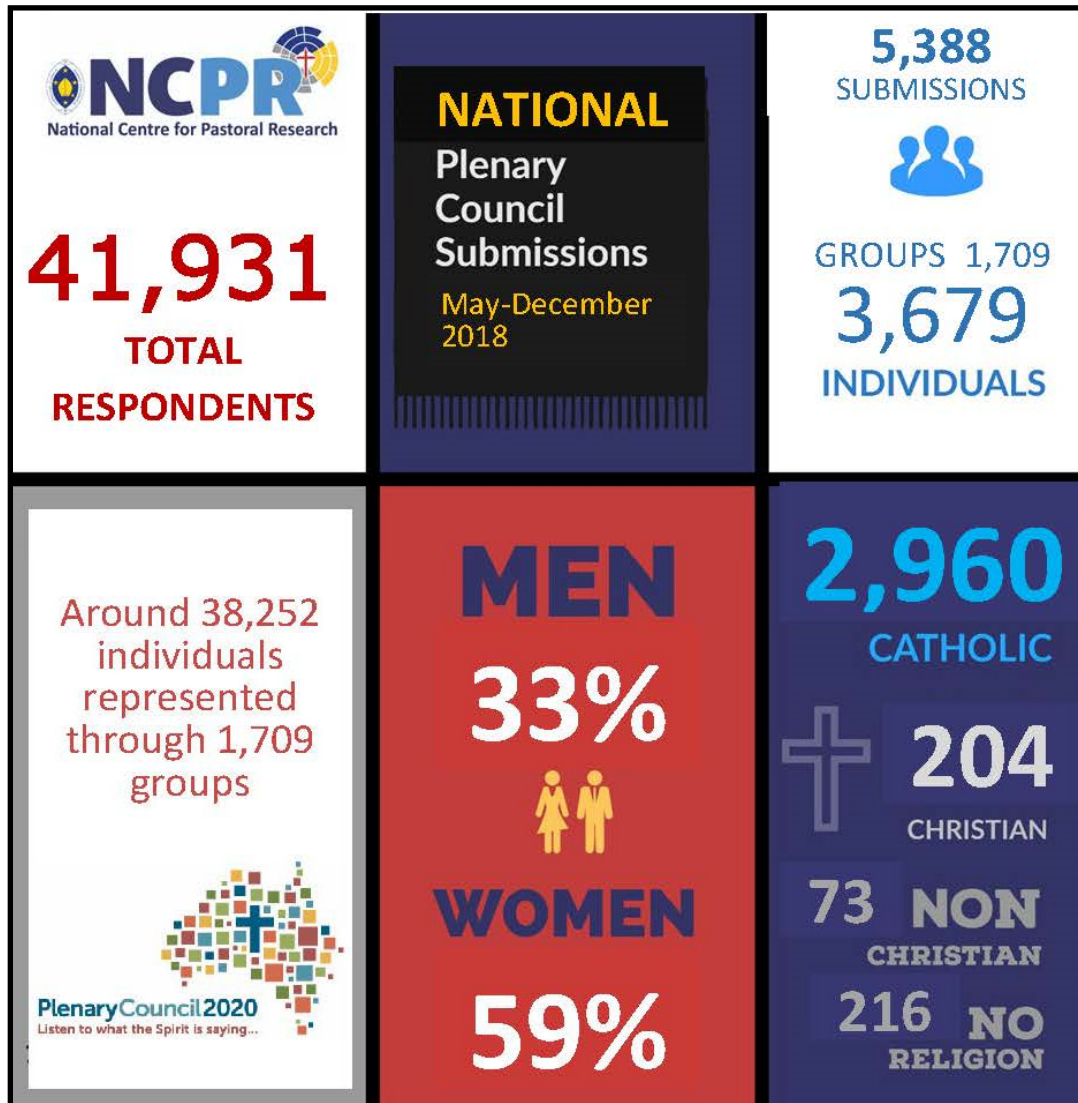
Table 6: Religious description (for those who answered 'Catholic' to previous question)

Religious description	Total
I am Catholic and regularly attend Mass and other church activities	49
I am Catholic and go to Mass and church activities sometimes	7
I am Catholic, but I don't practise or get involved in anything	2
I consider myself Catholic but I am not sure what to think about the Catholic faith	6
Other	6
Not Stated	0
Total	70

More information on the National Plenary Council submissions

What's been happening with the National Plenary Council submissions?

Below are a few details of the national summary of submissions received from May until 31 December 2018.



How will the Plenary Council data be analysed?

One of the questions we keep getting asked is, "What is going to happen to my submission to Plenary Council?" To read more about our data analysis procedures please visit this link on our website: <https://pro.catholic.org.au/pro-research-projects/plenary-council-2020/>

Where can I get the latest updates?

Go to the Plenary Council website: <http://plenarycouncil.catholic.org.au/>

Report prepared by: National Centre for Pastoral Research
Australian Catholic Bishops Conference
GPO Box 368
Canberra ACT 2601
Australia

Telephone: +61 (02) 6201 9812
Email: t.dantis@pro.catholic.org.au
Web: www.pro.catholic.org.au

© Copyright January 2019 Australian Catholic Bishops Conference